

Schloß Waldthausen



Im Wald 1, 55257
Budenheim, Germany.
Tel: +49 (0) 6131-145-199
+ 49 (0) 6131-145-225

Info package

2. Index
3. Check-In, floor plans, and opening hours
4. Ground floor plan of the castle
5. Basement floor plan of the castle
6. Restaurant and auditorium floor plan
7. How to travel to Schloß Waldthausen
8. Bus schedule from Mainz main station to Schloß Waldthausen
9. Bus schedule from Schloß Waldthausen to Mainz main station
10. Mainz travel map
11. Information on Schloß Waldthausen

Checking into the guest rooms, areas, and opening times:

Please check in at the reception desk in the Castel Schloß Waldthausen (1 in map).

Guest rooms are in building B & C (3 in map) just pass the restaurant/terrace (2 in map).

Opening hours restaurant Monday to Friday:

Breakfast starts at 07:00 to 09:00 a.m.

Lunch starts at 12:00 to 01:45 p.m.

Dinner starts at 06:00 to 07:30 p.m.

(Please be aware that we do not offer dinner on Friday).

For questions or wake up calls please contact our reception desk +49 (0) 6131-145-199 or +49 (0) 6131-145-225

The restaurant “Turm” is 5 minutes walk form the castle. Cross the main road and then follow the sign (approx 200 meters).

Opening hours “Turm”:

Daily open from 10:30 a.m. to midnight.

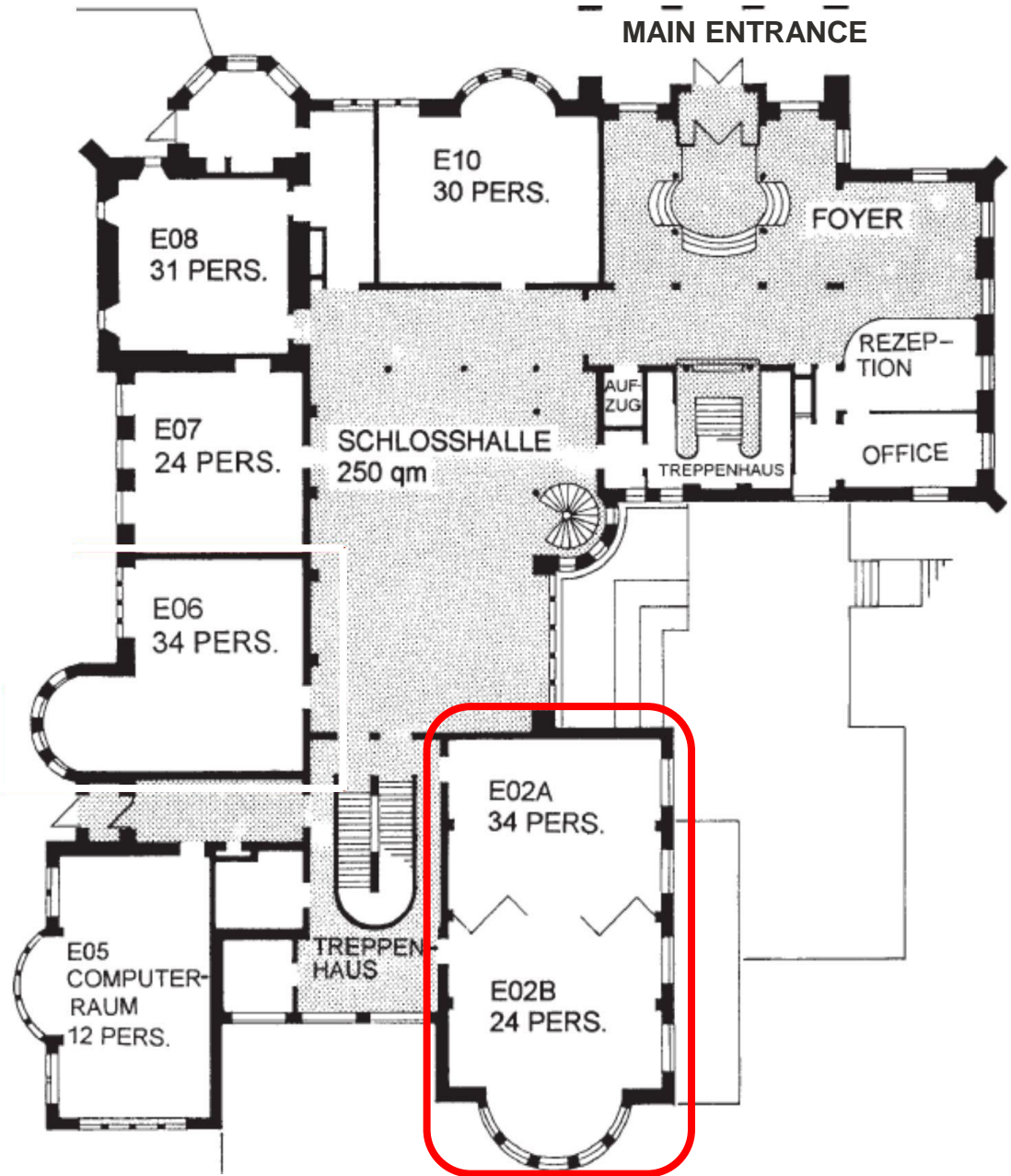
The confernece starts on Monday 26th August, 2015 at 9:05 a.m. in room E 02 a/b.



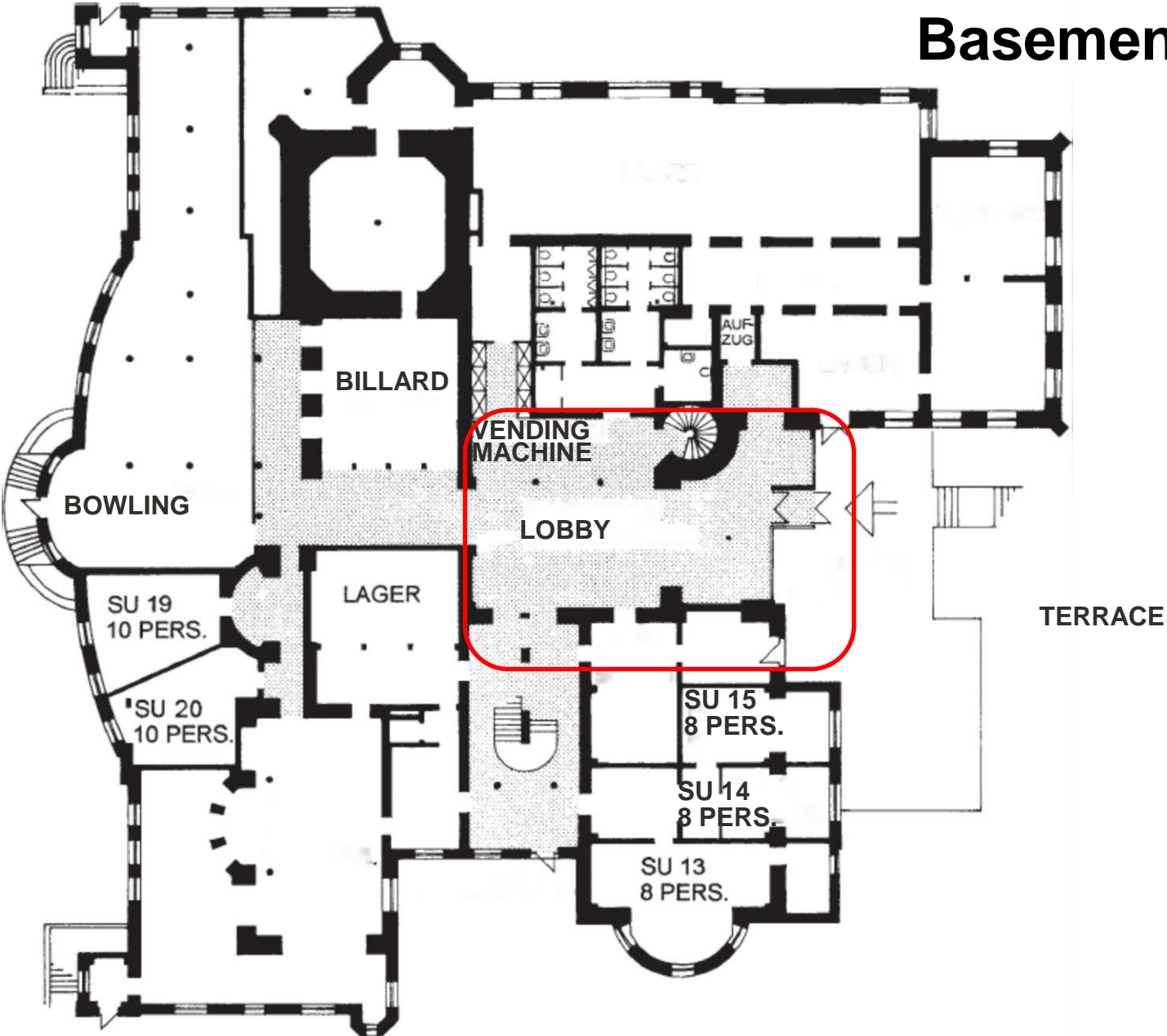
- 1 Castle Schloß Waldthausen
- 2 Auditorium and Restaurant
- 3 Accommodation B and C Building
- 4 Parking area
- 5 Bus stops
- 6 Restaurant “Turm”

Ground Floor

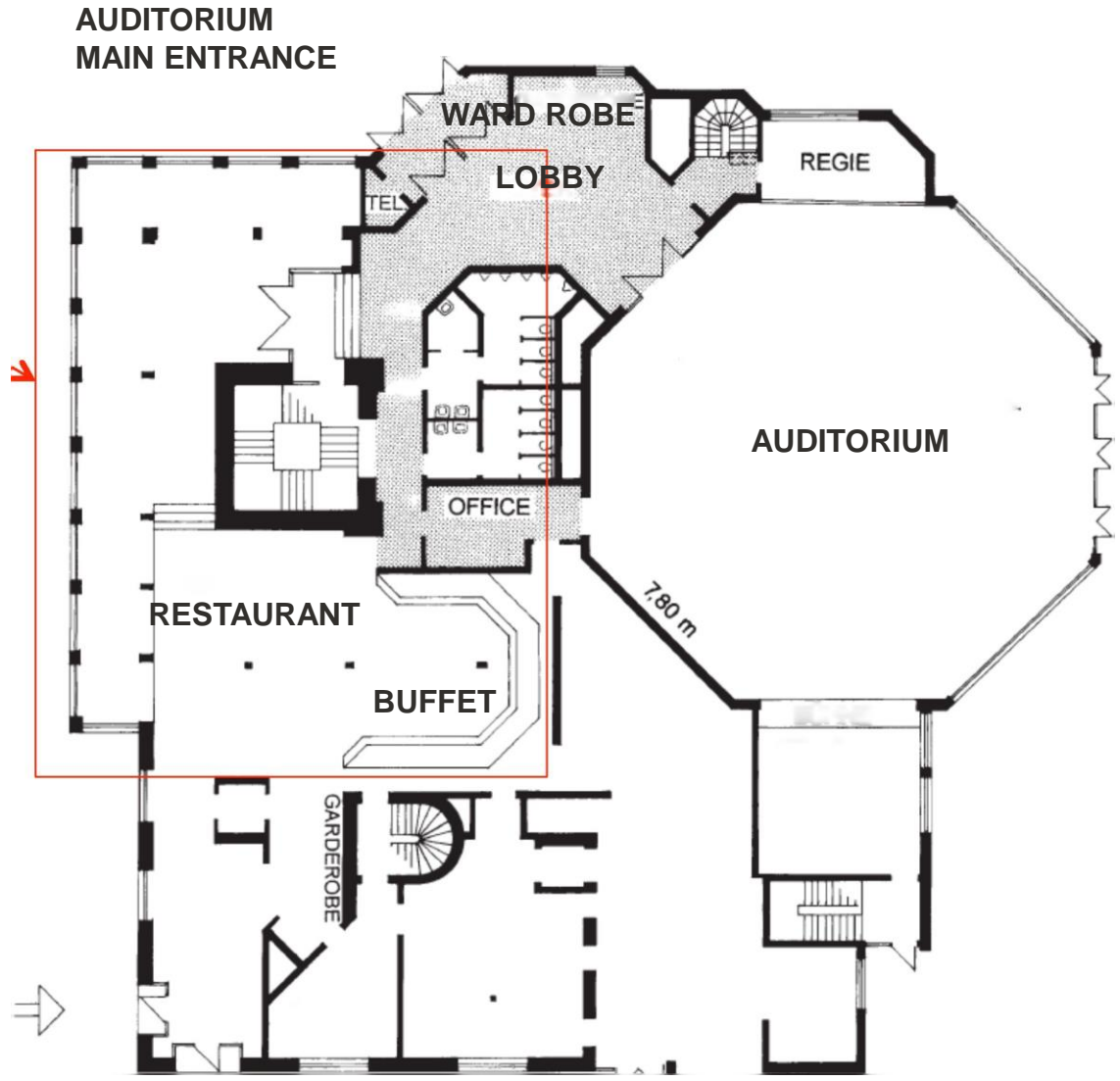
TERRACE



Basement Floor



Restaurant and auditorium



Traveling to Schloß Waldthausen

From Frankfurt International airport:

- Take the regional train S 8 (leaves from track 3) from FRA to Mainz (direction Wiesbaden).
- Regional train S 8 leaves every 30 minutes. Please check the time table at <http://www.bahn.de/>.
- You have to buy a ticket before entering the train.

PLEASE NOTE: The ticket is also valid for the bus in Mainz so if you come from FRA **do not buy** a bus ticket at Mainz main station.

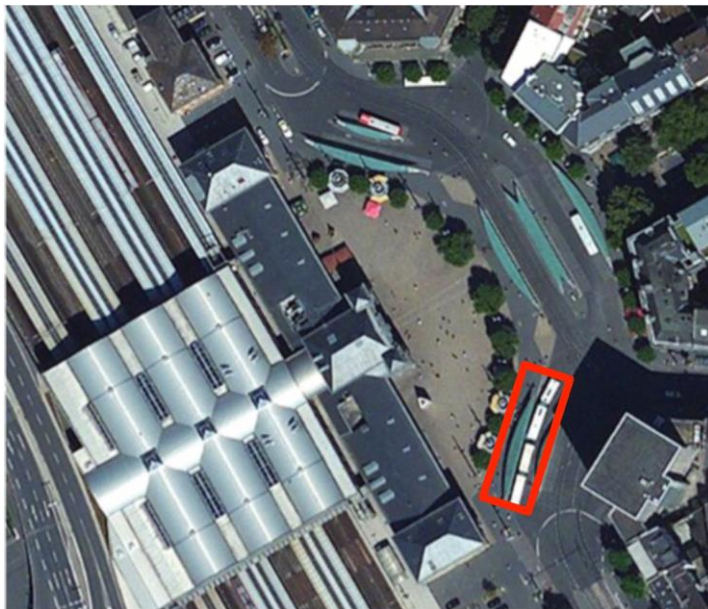
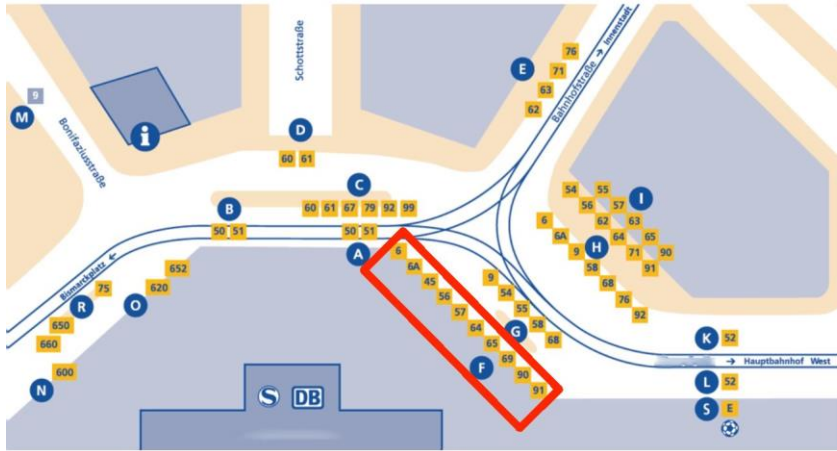
From Mainz main train station (Mainz Hauptbahnhof) to Schloß Waldthausen:

- Take bus No. 64 direction Budenheim (from platform F, see attached map and schedule).
- You can pay directly to the driver or get a ticket at the automatic ticket machines (Note from above that if coming from FRA you do not need to buy a ticket).
- It is a few minutes walk from the stop to the castle (see attached map).

By car:

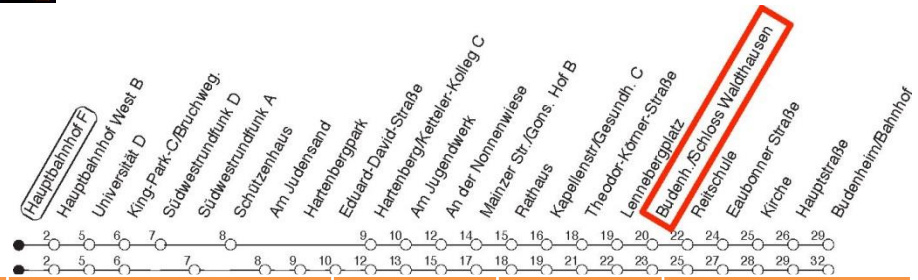
- It is best that you look up specific directions in Google maps or your trusted GPS.
- The address is: Im Wald 1, 55257 Budenheim, Germany. Tel: +49 (0) 6131-145-199.

Bus schedule from Mainz main train station to Schloß Waldthausen/Budenheim



64

STATION: HAUPTBAHNHOF F
DIRECTION: BUDENHEIM/BAHNHOF



	Montag bis Freitag			Samstag		Sonntag		Ferien Mo - Fr			
Std.	Minuten			Minuten		Minuten		Minuten			
5	10G	40						10G	40		
6	16	41			o o		o x	16	41		
7	01	21	36B	41	10x		o x	01	21	41	
8	01G	21	41		10x	46		01G	21	41	
9	01G	21	46		16	46	10x	40L	01G	21	46
10	16	46			16	46	10x	40L	16	46	
11	16	46			16	46	10x	40L	16	46	
12	21	41			16	46	10x	40L	21	41	
13	01	21	41		16	46	10x	40L	01	21	41
14	01	21	41		16	46	10x	40L	01	21	41
15	01	21	41		16	46	10x	40L	01	21	41
16	01	21	41		16	46	10x	40L	01	21	41
17	01	21	41		16	46	10x	40L	01	21	41
18	01	21	46		16	46	10x	40L	01	21	46
19	16	46			10x	40x	10x	40L	16	46	
20	16	40 L			10x	40 L	10x	40L	16	40 L	
21	10x	40 L			10x	40 L	10x	40L	10x	40 L	
22	10x	40 L			10x	40 L	10x	40L	10x	40 L	
23	10x	40 L			10x	40 L	10x	40L	10x	40 L	
0	1 Oxtn				10x		30		1 Oxtn		

G : Nur bis Gonsenheim/Lennebergplatz B : Nach King-Park-Center/Bruchwegstadion zum Berufsschulzentrum L : Nur bis Gonsenheim/Lennebergplatz, über Hartenbergpark

x : Über Hartenbergpark fn : Nur Nacht Freitag auf Samstag und Nacht vor Feiertag auf den Feiertag md : Nur Montag - Donnerstag, nicht in den Nächten vor Feiertagen

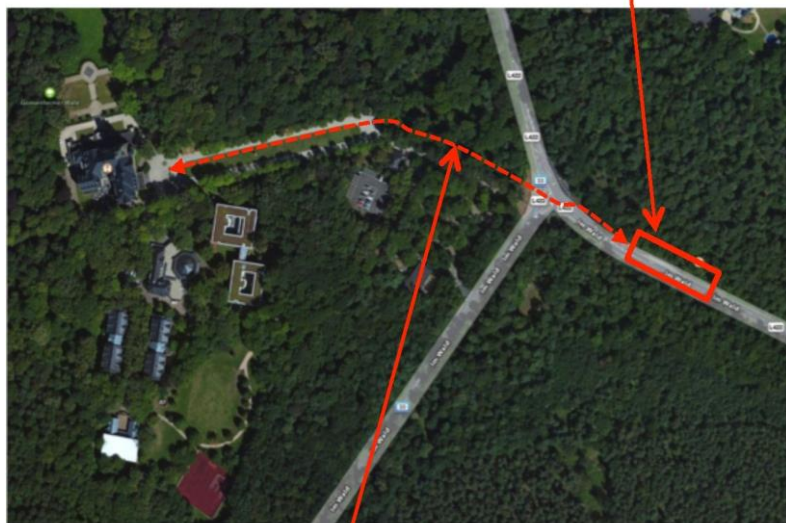
Ferien in RLP: 23.12.13-7.1.14/3. und 4.3./11.4.-25.4. /30.5./20.6./28.7.-5.9./20.10.-31.10.
 Weitere Infos Im Verkehrs Center Mainz (Tel. 0 61 31 - 12 77 77) und www.mvg-malnz.de GemeinschaftsInle MVG und ORN 9

Bus schedule from Schloß Waldthausen/Budenheim to Mainz main train station

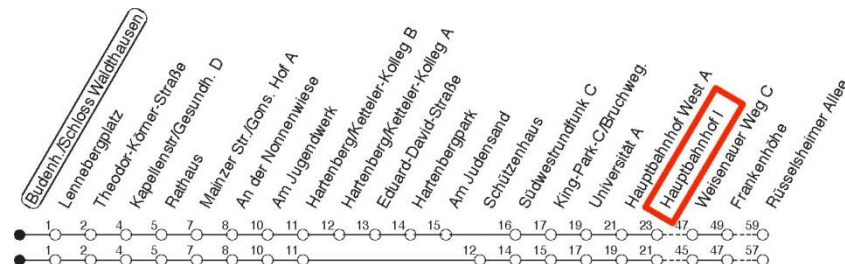
64

STATION: SCHLOSS WALDTHAUSEN DIRECTION: LAUBENHEIM

BUS STATION



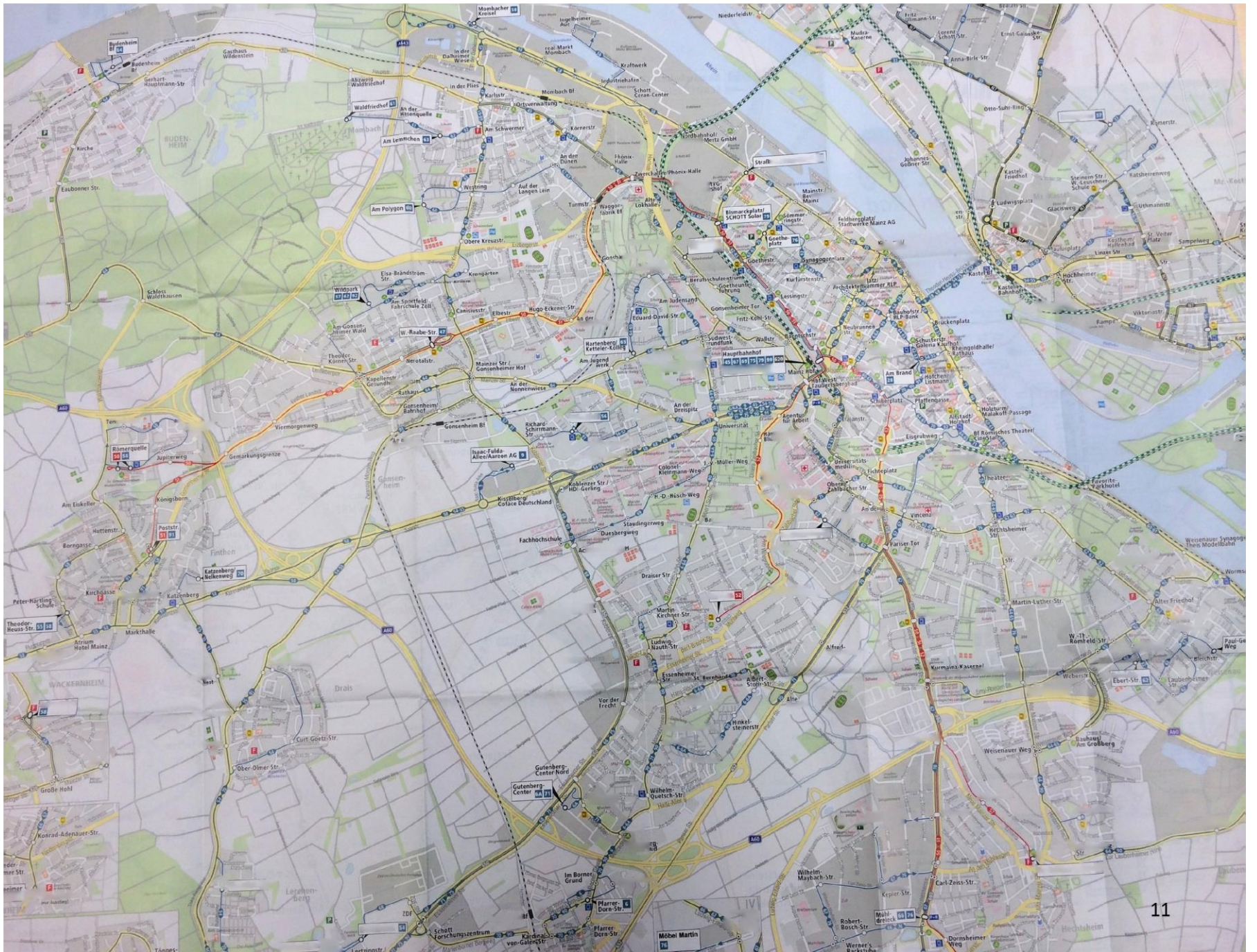
WALKING PATH TO SCHLOß WALDTHAUSEN



	Montag bis Freitag				Samstag		Sonntag		Ferien Mo - Fr				
Std.	Minuten				Minuten		Minuten		Minuten				
5	49										49		
6	09	29	47	57H							09	29	47
7	07	27	37Hc	47F	26H	56h					07	27	47 f
8	07	32			32						07	32	
9	02	32			02	32		56h			02	32	
10	02	32			02	32		56hg			02	32	
11	02	27			02	32		56hg			02	27	
12	07	27			02	32		56hg			07	27	
13	07	27	47		02	32		56hg			07	27	47
14	07	27	47		02	32		56hg			07	27	47
15	07	27	47		02	32		56hg			07	27	47
16	07	27	47		02	32		56hg			07	27	47
17	07	27	47		02	32		56hg			07	27	47
18	07	32			02	32	56hg	56hg			07	32	
19	02	32			26hg	56hg		56hg			02	32	
20	02	26hg	56h _s		26hg	56hg		56hg			02	26hg	56hg
21	56h _e				56hg			56hg			56hg		
22	56h _s				56hg			56hg			56hg		
23	56hgfn				56hg						56hgfn		

H : Nur bis MZ Hauptbahnhof Hc: Nur bis MZ Hauptbahnhof, ab MZ-Gonsenheim/Kapellenstraße über An der Bruchspitze - Zwerchallee - Berufsschulzentrum - Universität f : Nur bis MZ Frankenhöhe
h : Über MZ/Hartenbergpark fn : Nur Nacht Freitag auf Samstag und Nacht vor Feiertag auf den Feiertag

Ferien in RLP: 23.12.13-7.1.14/3. und 4.3./11.4.-25.4. /30.5./20.6./28.7.-5.9./20.10.-31.10.



Conference rooms:

12 conference rooms • 8 seminar rooms • 30-320 m²

Catering:

Restaurant: 180 seats - Mall: up to 240 seats

Wine tavern: 100 seats - Barbecue area: 40-200 seats

Castle terrace: 200 seats

Rooms - Facilities:

134 single rooms - 7 double rooms Shower/WC -

Telephone - WLAN connection

Conference technology:

Projectors - ISDN and DSL connections - Screens Wide screen • Over Head Projectors • Flip-charts Metaplan walls - Video cameras - Monitors Presentation kit • Laser pointers • Table, Hall,

Pendant and clip-on microphones • Podium • Stage

Fitness and leisure Facilities:

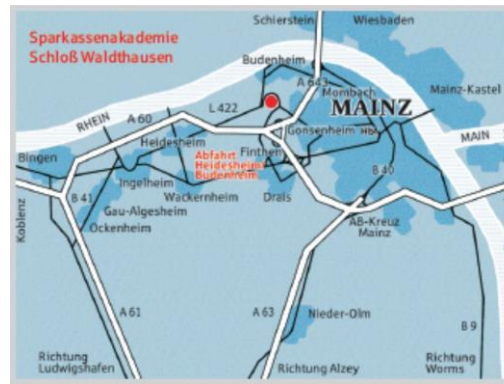
Gym • Sauna • Solarium - Tennis courts • Bowling alley

Billiard room -Cosy wine tavern -Television room

Social and cultural programme:

Wine and sparkling wine tasting - Boat trips on the Rhine Excursions/city tours - Sports programme with sports coaches • On-site concerts or art exhibitions

Free parking



By car:

4 km from the Heidesheim motorway exit on the A 60.

ICE-station:

8 km from Mainz Central Railway Station with the city bus line 64

Airport:

40 km from Frankfurt/Main, 80 km from Hahn/Hunsrück

Sparkassenverband Rheinland-Pfalz

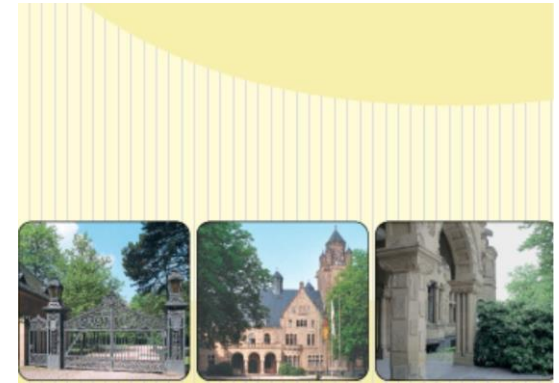
Sparkassenakademie Schloß Waldthausen Im

Wald 1 55257 Budenheim Germany

Telefon: 0049 (0) 61 31 / 145 -199 Telefax:

0049 (0) 61 31 / 145 -1 01 E-Mail:

Akademie@sv-rlp.de www.sv-rlp.de



Sparkassenakademie Schloß Waldthausen